



UCO

VISTABORD

UCO Vistabord Internal Ceilings

UCO Vistabord Internal Wet Area Linings

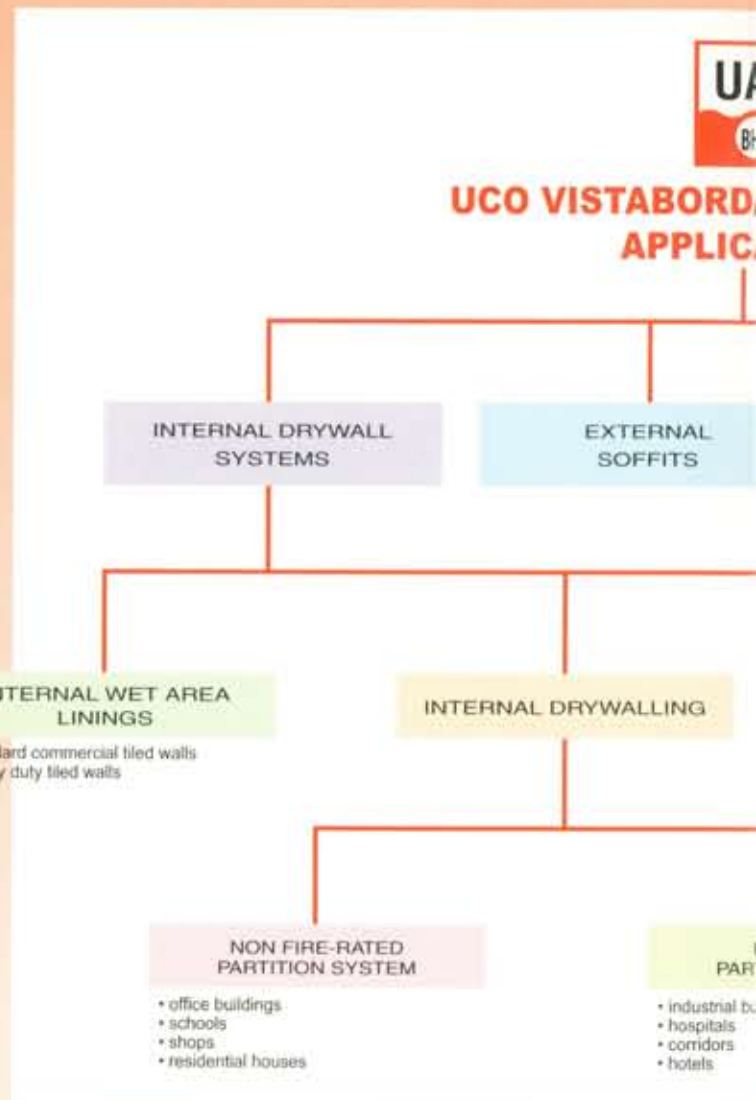
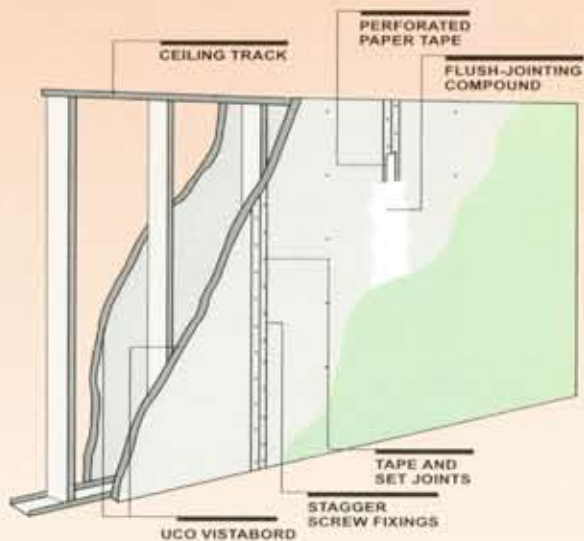
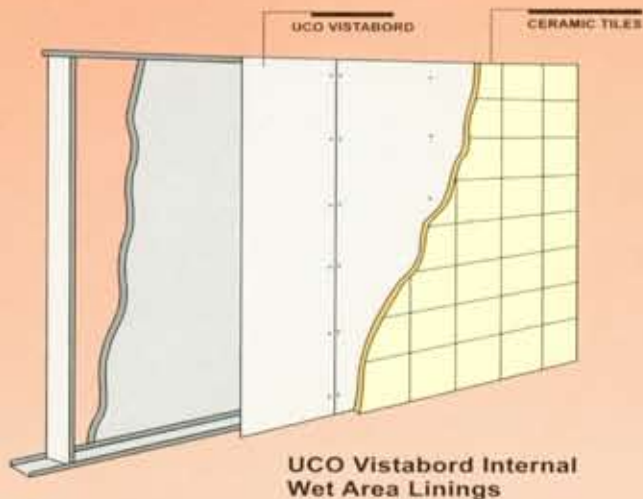
UCO Vistabord Internal Drywall Systems





VISTABORD

UCO VISTABORD is a sanded smooth surfaced asbestos-free fibre reinforced cement board with recessed edges. The unsanded surface equivalent, **UCO FLEXABORD** can also be manufactured. UCO Vistabord is the ultimate flush-jointable board, developed to create a homogeneous seamless joint that can be tiled-on. This board is also available with straight edges, **UCO MULTIFLEX**.



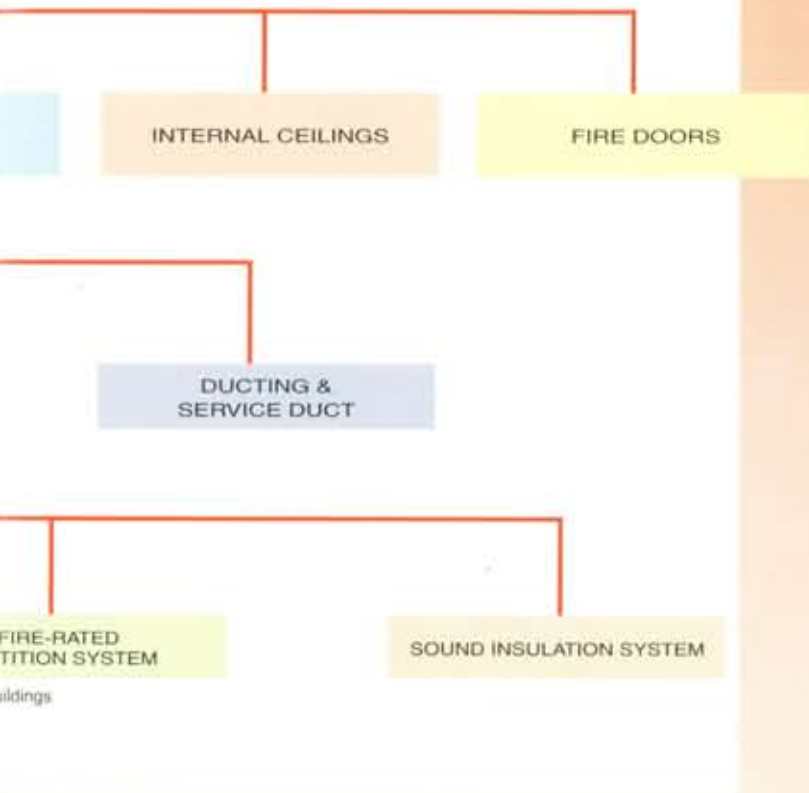
ADVANTAGES

- ✓ **LIGHTWEIGHT**
Reduces weight of walls by approximately 70% compared with brick walls.

ABORD



UCO MULTIFLEX APPLICATIONS



✓ WATER-RESISTANT

Excellent for wet areas and tile-on applications.

✓ FIRE-RESISTANT

Class 'O' classification according to Uniform Building By-Laws 1984 and also available in fire-rated system.

✓ TERMITE-FREE

Not affected by attacks by vermin, termites or other insects.

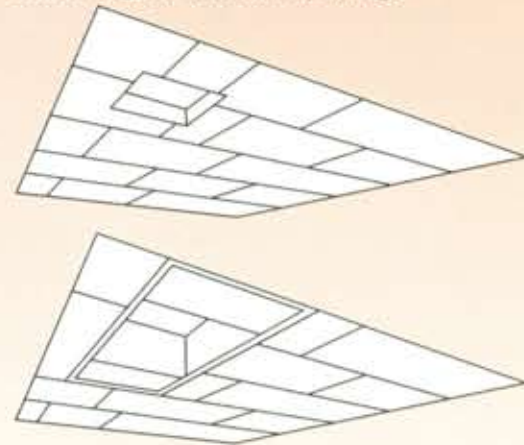
✓ SOUND-INSULATED

Sound Transmission Class (STC) rating of 45dB for a 6.0 mm thick board.

UCO Vistabord Internal Ceilings



Sheet Layout Around Openings



UCO Vistabord External Soffits



✓ IMPACT / ABRASION-RESISTANT

Scuff-resistant, offering superior impact and abrasion resistance.

✓ FINISH VERSATILE

Can accept a variety of finishes, including paint, texture coating, tiles and wallpaper.

✓ RAPID INSTALLATION

Easily and rapidly constructed, cutting down construction time and cost compared to the wet trade.

✓ DRY CONSTRUCTION

Reduces messiness and therefore clean-up at site. Also minimises inconvenience to other trades compared to the labour-intensive wet trade.

✓ DURABLE

Immune to permanent water damage and impervious to high humidity/moisture. Also does not warp, crack or split easily.

PRODUCT CHARACTERISTICS

BASIC COMPOSITION

UCO Vistabord is manufactured from specially treated cellulose fibre, Portland cement and refined sand.

FIRE RESISTANCE

UCO Vistabord conforms to the following:

- a. Uniform Building By-Laws 1984 Class 'O'
- b. BS 476 Part 6 (fire propagation)

Fire Propagation Index, I	= 0.1 to 0.2
Sub-index i. 1	= 0.0
i. 2	= 0.0
i. 3	= 0.1 to 0.2
- c. BS 476 Part 7 (surface spread of flame)
Class (1) - No flame spread

DENSITY (oven dry)

6.0mm & 9.0mm - 1.38g/cc

MOISTURE CONTENT AT EQUILIBRIUM

EMC 8%

MOISTURE MOVEMENT

EMC to saturated 0.06%
EMC to oven dry 0.12%

WATER ABSORPTION

BY weight 30%

THERMAL CONDUCTIVITY

Estimated At 25° C 0.47W/mk

THERMAL EXPANSION COEFFICIENT

Estimated 7.5×10^{-6}

SOUND TRANSMISSION LOSS

Estimated
6.0mm - 25dB
9.0mm - 28dB

FLEXURAL STRENGTH (MOR)

EMC average 17 MPa
Saturated average 12 MPa

DIMENSIONS

Thickness 6.0 mm, 7.5*mm, 9.0mm
and 12.0* mm

Length 2440mm, 2745* mm and 3050* mm

Width 1220 mm

* Subject to stock availability and economic production run

ACCESSORIES

• Screws

For 6.0 mm thick board fixed onto light gauge steel framing (less than 1.0 mm thick), use Streaker no. 8 self-embedding head screws:

25 mm long for single-layer applications

45 mm long for double-layer applications

Above 6.0 mm thick board fixed onto steel framing (thickness: minimum 1.0 mm & maximum 1.6 mm), use

Wing-tip self-embedding Tek screws:

30 mm long for single-layer applications

40 mm long for double-layer applications

• Expansion Joints

Rondo 33 Expansion Joint Kit is recommended for flush jointing to cater for board movement.

• Steel Framing

Framing sections shall be galvanised or zinc-coated with a minimum base steel (BMT) of 0.55 mm, i.e. typically 0.6 mm coating thickness.

• Flush-Jointing Compound

For wet area applications, a cementitious jointing compound should be used. Our technical personnel should be consulted for assistance to ensure the right material is used.

• Corner Beading

To flush external corners, use perforated metal corner beads over the corner sheet edge before fixing with screws or clouts. In wet area applications, use perforated plastic corner beads.

• Joint Reinforcing Tape

Perforated paper reinforcing tapes are recommended for flush setting of joints to achieve good results. Woven-linen and self-adhesive tapes must not be used.

LIMITATIONS OF FLUSH JOINTED WALLS

Flush jointing is not recommended for sheets fixed directly to purlin or girts as these members are usually subject to the thermal and structural movement beyond the capacity of a flush joint.

WARRANTY

UCO Vistabord is manufactured under UAC's stringent control, conforming to the highest standards under the International Accreditation System MS ISO 9002, to guarantee the highest satisfaction in quality.

The recommendations in this brochure are formulated along the lines of good building practice. However, this brochure is not intended to be an exhaustive statement of all relevant data.

As the success of building projects depends on many factors outside the Company's control (e.g. quality of workmanship, particular design detail requirements, etc.), the Company accepts no responsibility for or in connection with the quality of the

projects or their suitability when completed.

All conditions, warranties obligations and liabilities of any kind which are or may be implied or imposed to the contrary by any statute, rule or regulation or under the general law and whether arising from the negligence of the Company, its servants or agents or otherwise are hereby excluded to the extent that the Company may be prevented by any statute, rule or regulation from doing so.

UAC Berhad does warrant that its products are free from defects due to materials or manufacturing faults. If any of its product defects are due to such faults, the Company will replace the products for the purchaser.



UAC BERHAD

3rd Floor, Menara Boustead, 69 Jalan Raja Chulan,
50200 Kuala Lumpur, P.O. Box 12266, 50772 Kuala Lumpur.
Tel: 603-2141 2266 Fax: 603-2141 5160 Email: sales@uac.com.my
Web site: www.uac.com.my



5149H